



# S620

Build Guide

## SLIGER

# SCREWS

The S620 comes with a total of 6 different screws. For the purposes of this guide we will assign a unique color to each screw to signify their locations in this guide.



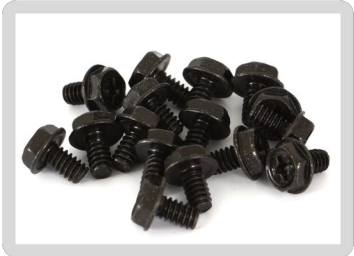
## **GREEN** M3 x 6mm PAN HEAD

Securing PCIe Cards  
SSD



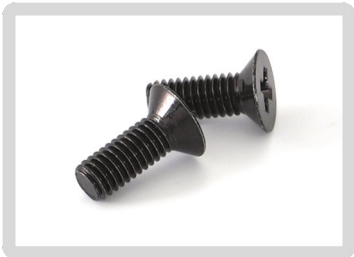
## **RED** M3 x 5mm FLAT HEAD

SSDs (on SSD bracket)



## **VIOLET** 6-32 x 1/4" HEX HEAD

Motherboard  
Power Supplies  
Radiator



## **PINK** M3 x 8mm FLAT HEAD

Power Cord Inlet



## **BLUE** 6-32 x 1/4" FLAT HEAD

Handle Bracket  
SFX PSU Brackets  
Side Fan / Radiator Bracket  
USB and Power Button Bracket

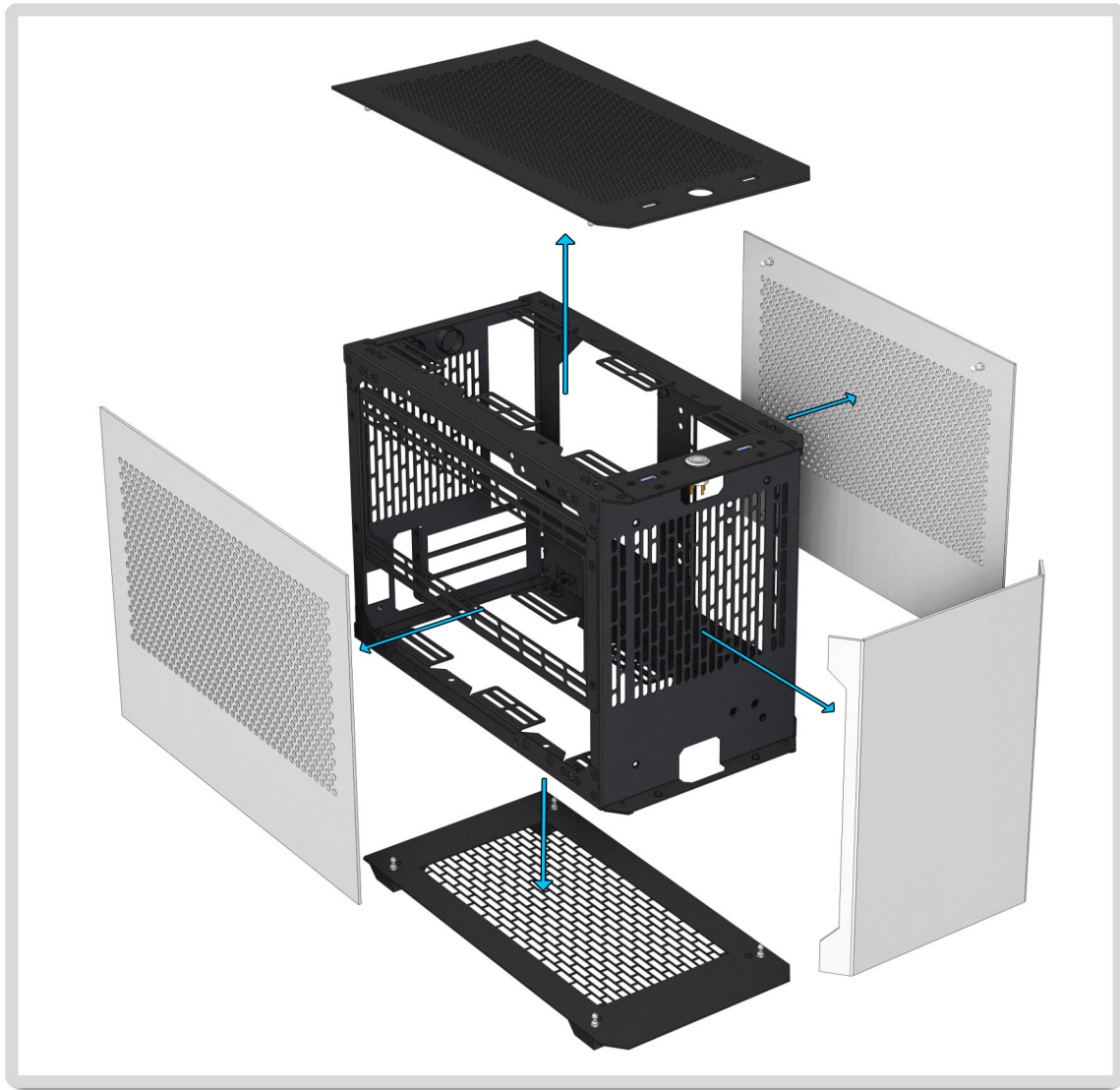


## **GREY** M3 x 12mm SOCKET CAP

Case Handle

# EASY-OFF PANELS

The front, side panels, top and bottom all have tool-less removal via their ball-stud mounting points. Careful, panels may be very tight on the first few times on/off.



## RE-ASSEMBLY NOTES

Side panels are reversible to either side.

Front Panel can be installed with either end at top or bottom.



# Power Button Location

The S620 has two power button locations allowing you to choose what orientation the case is. Either with the GPU on the bottom of the case, or GPU on the top of the case. Here is the process on removing the power button switch panel and installing it onto the other location.

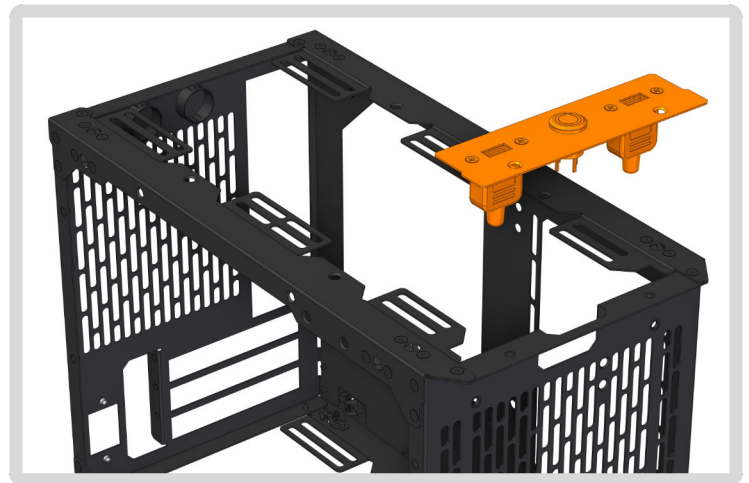
## Step 1

Remove **2x 6/32 x 1/4" FLAT HEAD**



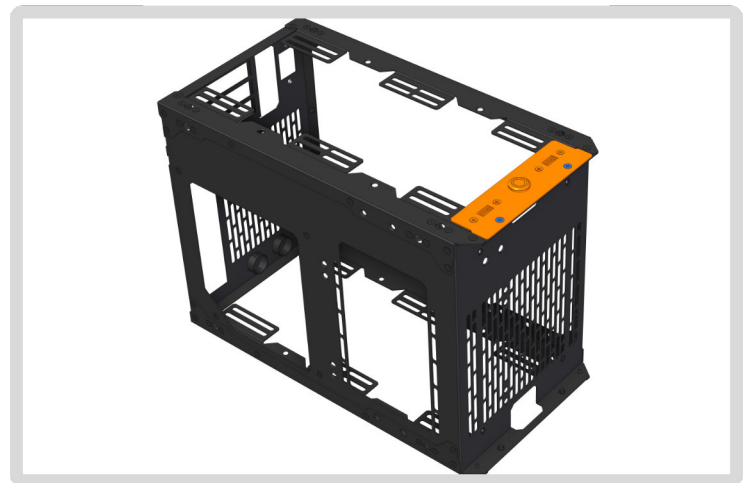
## Step 2

Remove Power button/ USB panel.



## Step 3

Flip chassis over and reinsert **2x 6/32 x 1/4" FLAT HEAD** to secure the Power button/USB panel.



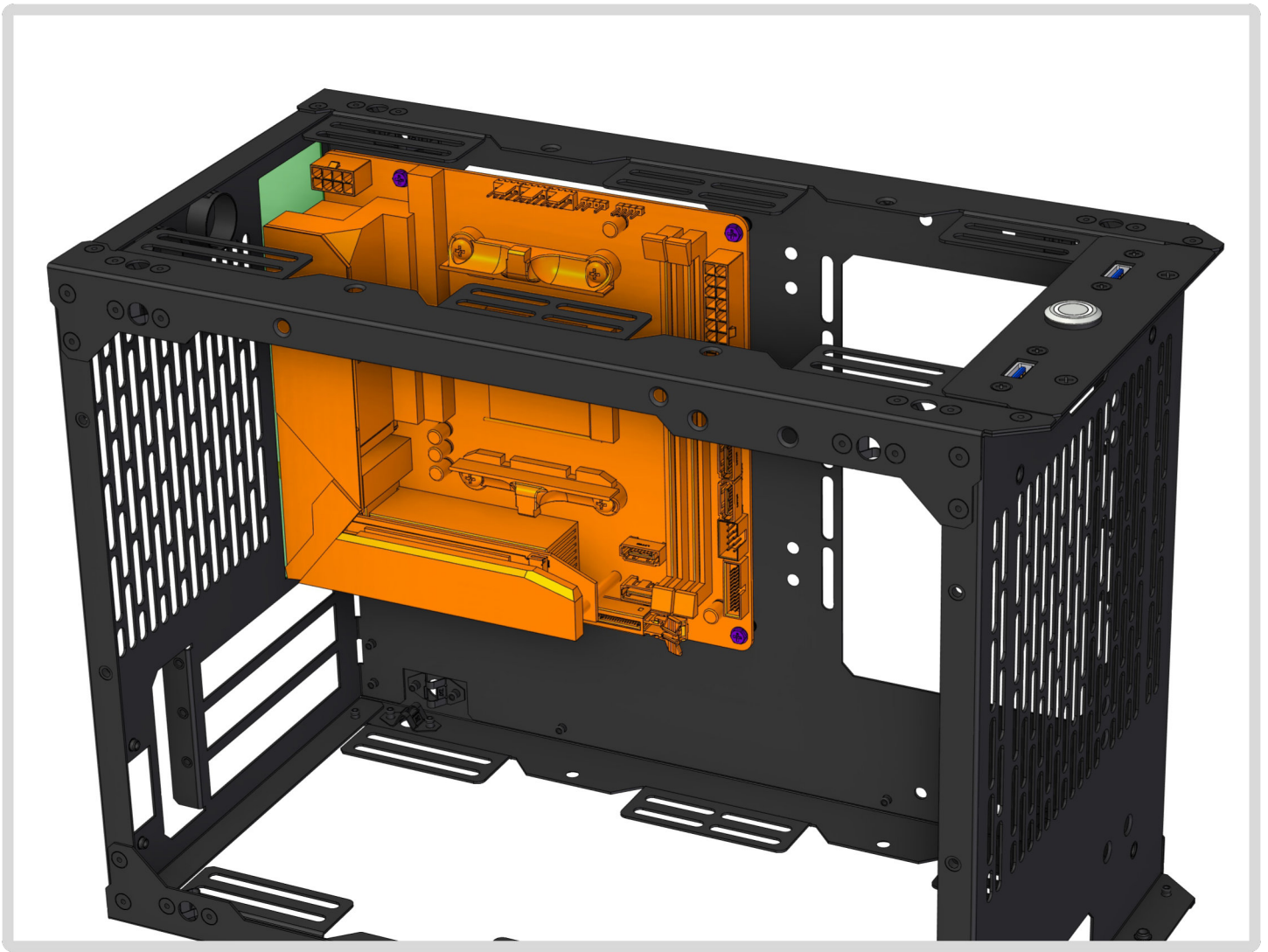


# MOTHERBOARD

Be sure to install your **IO shield** first!

Some CPU coolers and AIOs may require a back plate to be installed before installing the motherboard into the case. Once the **IO shield** is properly installed the motherboard can now be mounted using **4x 6-32 x 1/4" HEX HEAD** screws.

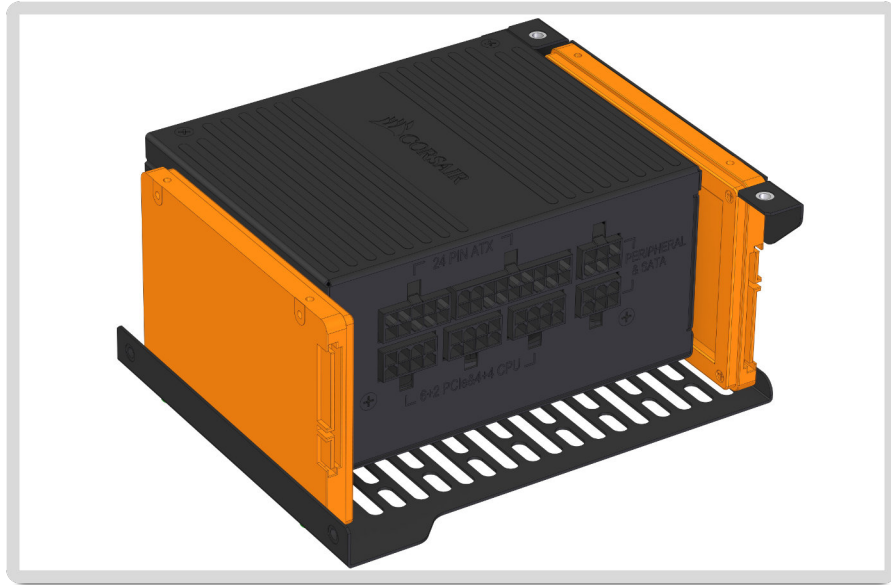
A Phillips #2 screw driver with a minimum 3" shaft length is recommended for installing these screws.



# SSD MOUNTING

The S620 has a two SSD mounting locations on the SFX PSU length-wise and width-wise bracket. On the length-wise bracket, one SSD attaches with **2x M3 x 6mm PAN HEAD** screw and the other attaches with **2x M3 x 5mm FLAT HEAD**.

Be sure to install drives with the SATA power and data connections facing the same direction as PSU power connections.



# SSD MOUNTING CONT.

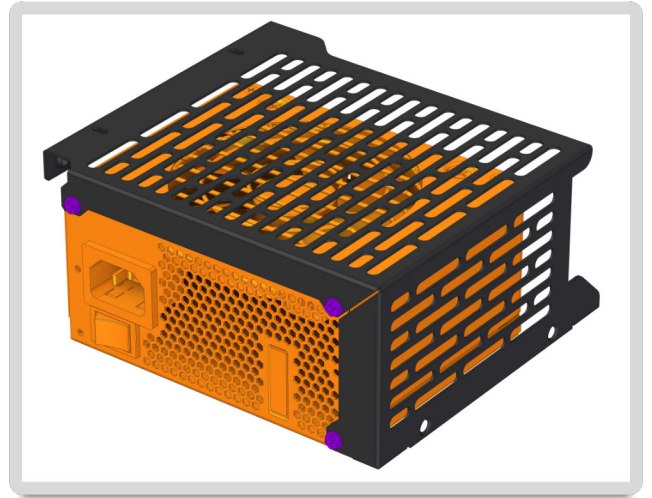
The S620 has a two SSD mounting locations on the SFX PSU length-wise and width-wise bracket. For the Width-wise bracket, each SSD attaches with **2x M3 x 6mm PAN HEAD** screws. Be sure to install drives with the SATA power and data connections facing the same direction as PSU power connections.





# POWER SUPPLY INSTALLATION

The SFX PSU attaches to the bracket with **3x 6-32 x 1/4" HEX HEAD** screws.



Install the power pig-tail by snaking it through the rear chassis hole and securing it with **2x M3 x 8mm FLAT HEAD** screws. Then insert into the SFX PSU.

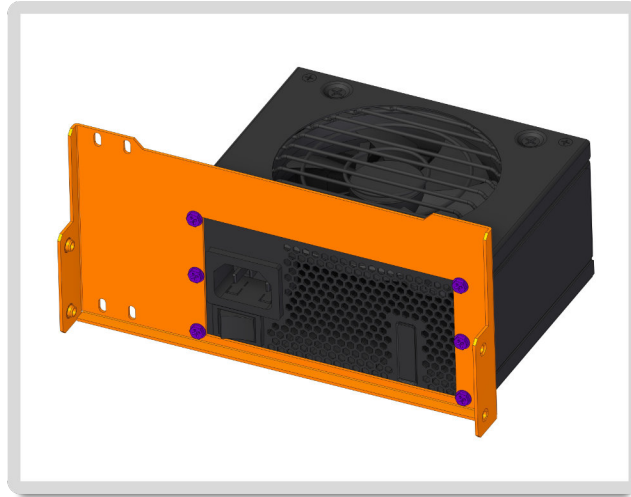


Lastly, the SFX PSU mounting bracket is secured to the case spine via **2x 6-32 x 1/4" FLAT HEAD** screws. These screws are located at the top middle of the spine, next to the motherboard corner standoff. There are also **2x 6-32 x 1/4" FLAT HEAD** screw locations behind the front panel of the case.

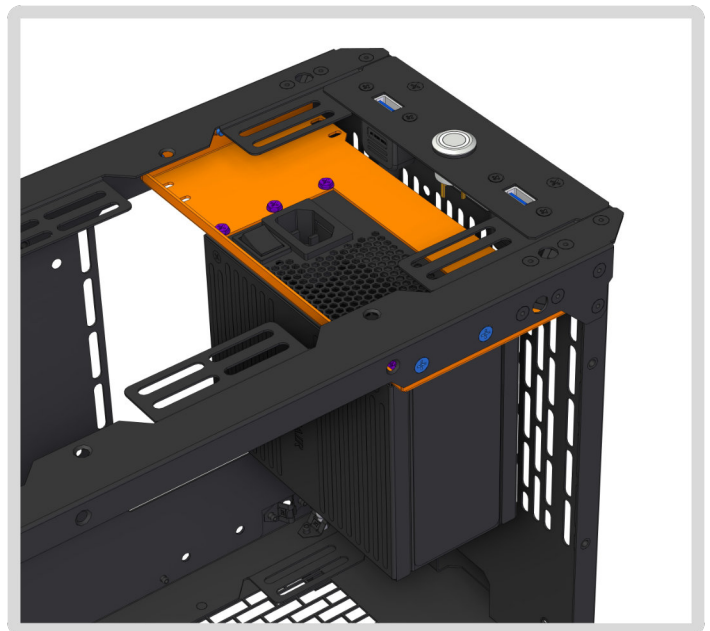
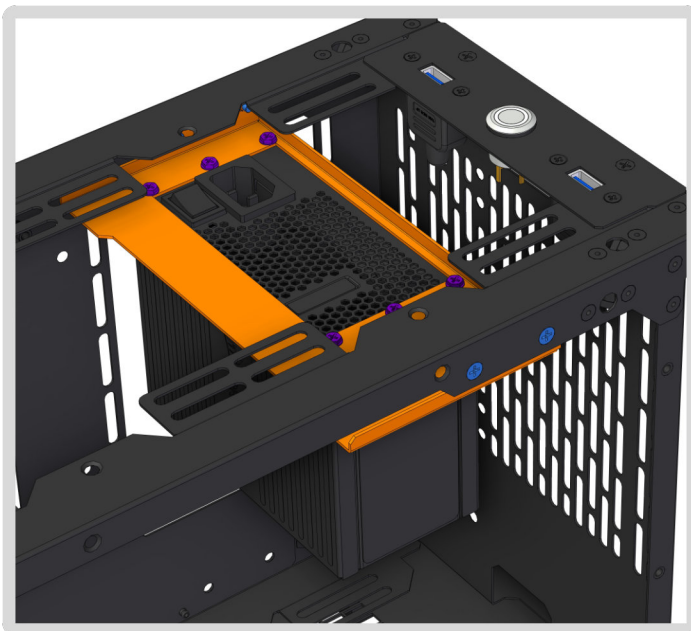


# WIDTH-WISE PSU INSTALLATION

The SFX PSU attaches to the width-wise bracket with **6x 6-32 x 1/4" HEX HEAD** screws.



Then SFX PSU mounting bracket is secured to the case spine via **4x 6-32 x 1/4" FLAT HEAD** screws as shown in the photo. **NOTE:** The width-wise bracket can be installed in either orientation shown to allow for different AIO/Fan configurations described throughout the manual.



# POWER CORD

## STANDARD MOUNT

The power cord should be installed by pulling it in from the rear through the power cord mount hole, passing through the cable mounting bracket. The inlet and metal plate are then mounted via **2x M3x5mm FLAT HEAD** screws as shown.



## PIGTAIL MOUNT

The cord should be installed by pulling it in from the rear through the power cord mount hole. With the cable partially out of the case the cable grommet should be clipped on to the power cord, and then clipped into the metal plate. The metal plate can then be mounted via **2x M3x5mm FLAT HEAD** screws.

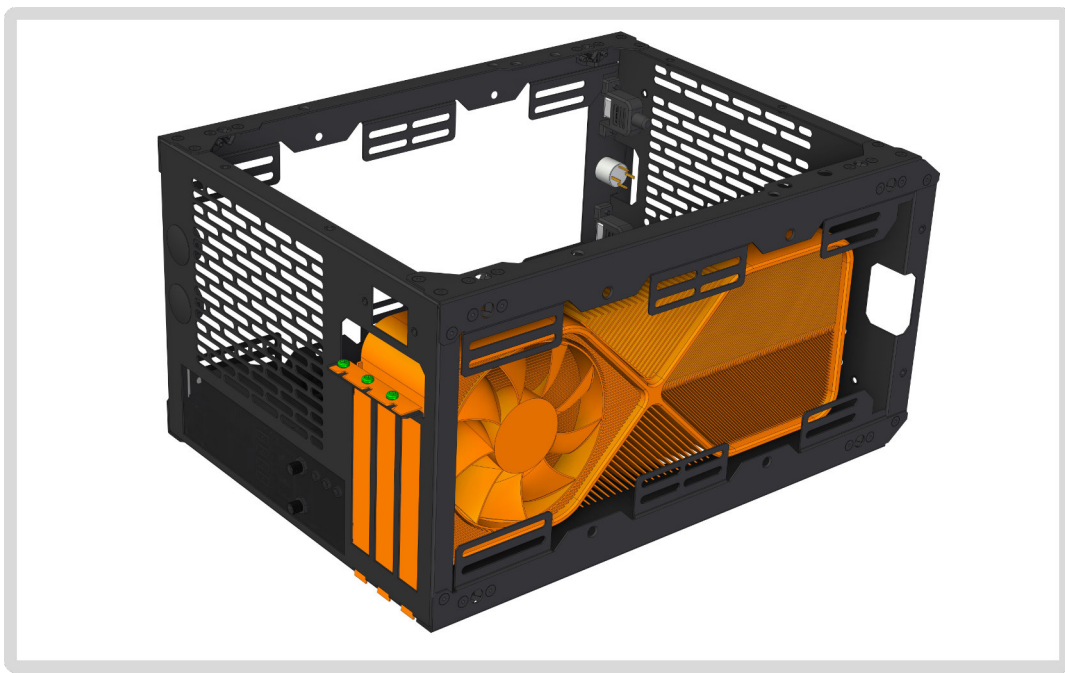
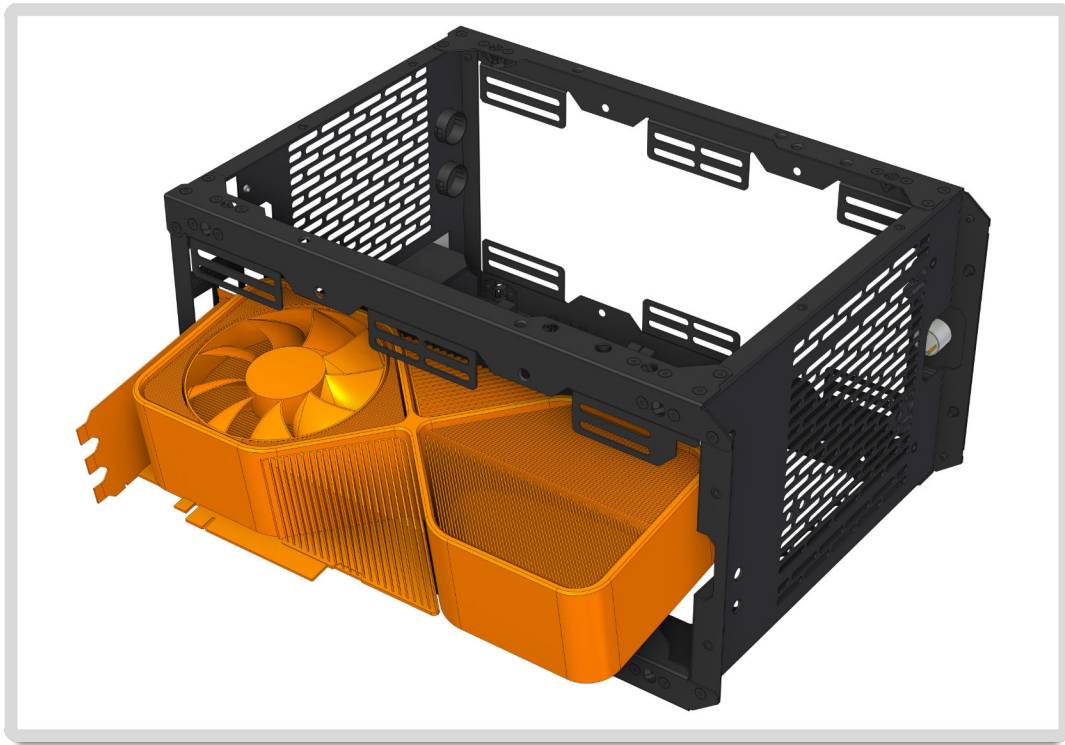




# PCIe CARD

The PCIe card is secured with up to **3x M3 x 6mm PAN HEAD** screws.

**NOTE:** Depending on your GPU card size. You may have to try different angles and approaches to get it in the chassis and seated into the PCIe slot. Do this before installing CPU Heatsink or CPU water cooling block.

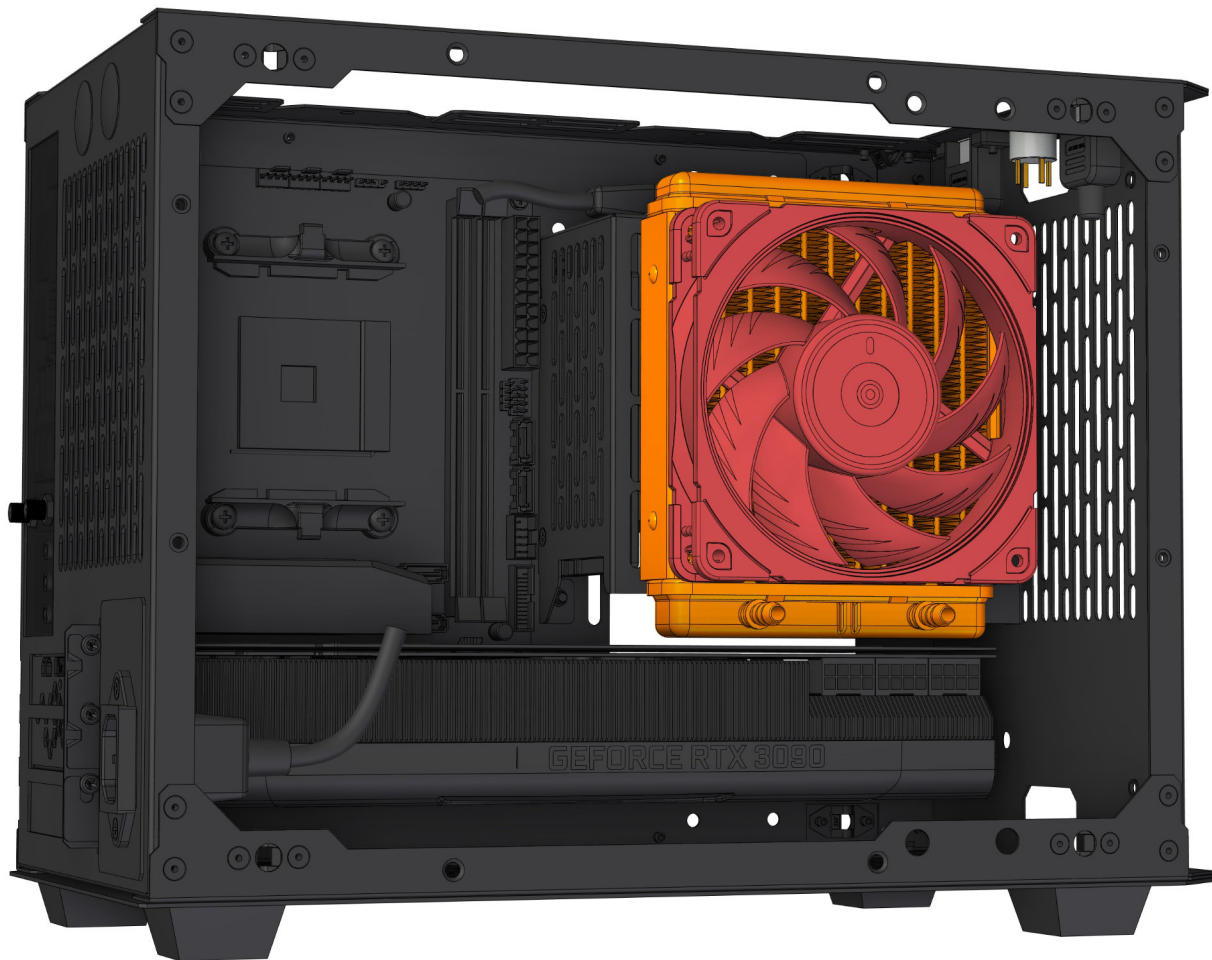


# 120/240/280mm AIO INSTALLATION

The S620 supports a variety of water-cooling / AIO setups. The three different configurations are; a 120mm AIO installed on the PSU Bracket, 240mm or a 280mm radiator attached to the side bracket.

The 120mm radiator can be mounted to the PSU bracket as shown in the image below. Using **4x 6-32 x 1/4" HEX HEAD** screws to secure it to the bracket. Hoses must come out of the radiator facing the open side of the case as shown.

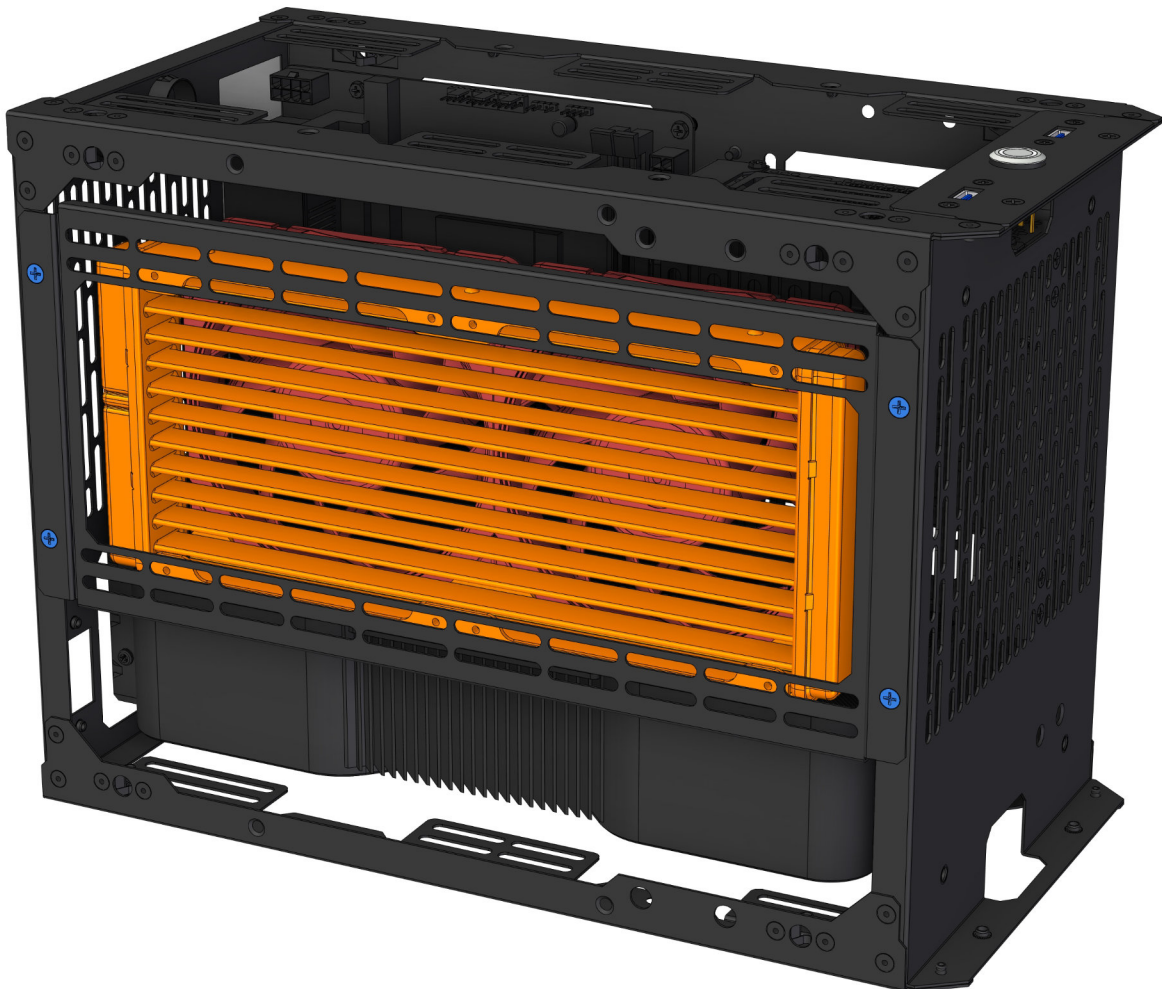
**NOTE:** For the 120mm AIO, You **MUST** attach the radiator first before installing your SFX PSU.



# 240/280mm AIO INSTALLATION CONT.

The S620 side bracket supports either a 240mm or 280mm radiator. Fans are recommend to be mounted on the inside exhausting air out the side panel through the radiator.

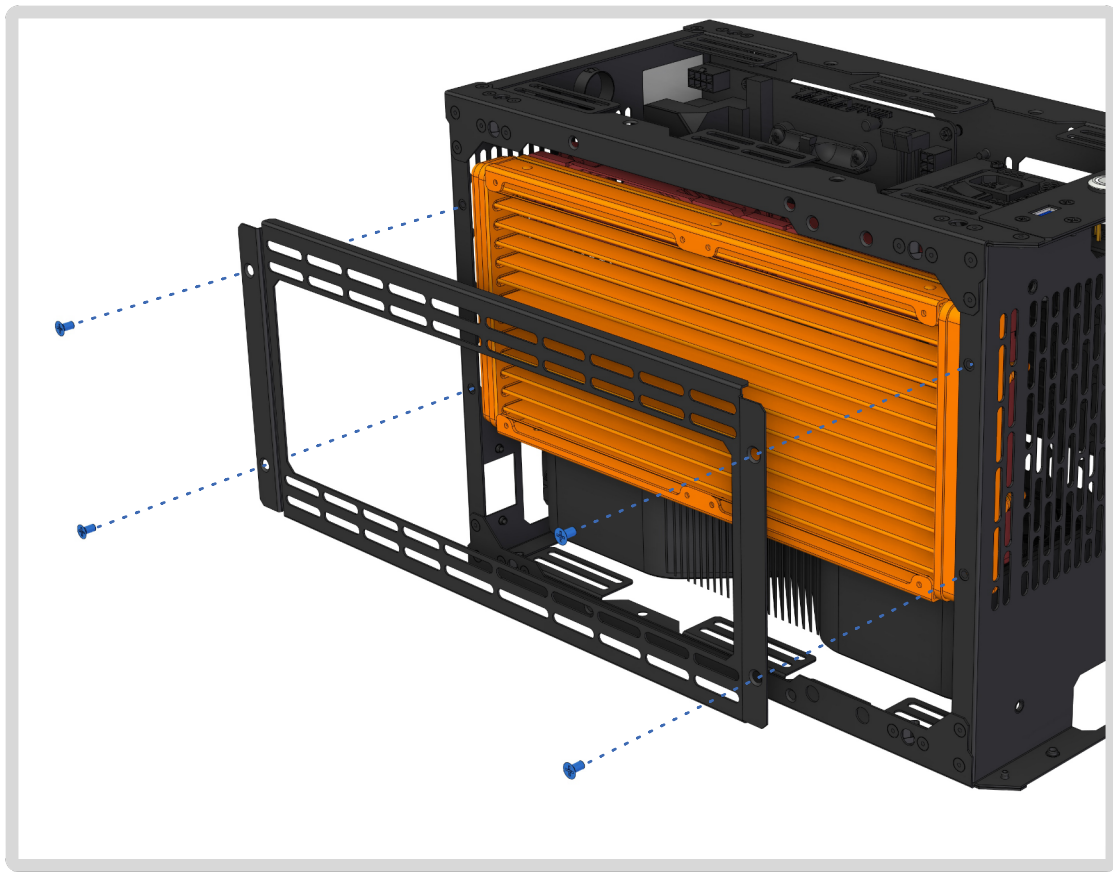
**NOTE:** For the 280mm radiator, it is best to set the radiator inside the case after getting the water block secured to the CPU, and then placing the side bracket over the radiator. Secure the radiator to side bracket with **4x to 8x 6-32 x 1/4" HEX HEAD** screws (**See next page**). Lastly, the side bracket is attached to the chassis with **4x 6-32 x 1/4" FLAT HEAD** screws.





# 240/280mm AIO INSTALLATION CONT.

280mm radiator fitment **NOTE:** it is a very snug fit.



# SIDE BRACKET FANS

The S620 side bracket can fit **2x** 120mm or 140mm fans.



**120mm**



**140mm**

# BOTTOM FANS

## Fitment Guide:

**2-Slot to 2.7-Slot GPU's** can fit - 140mm, 120mm x 25mm, 120mm x 15mm slim fans.

**3-Slot GPU** may fit 120mm x 15mm slim fans. Check clearance.

**Full 3-Slot GPU** can NOT fit any size fan.



# TOP MOUNTED FANS

The S620 can fit **2x** 120mm slim 15mm fans mounted on the top of the chassis.

**NOTE:** The case handle bracket can not be used with this configuration.

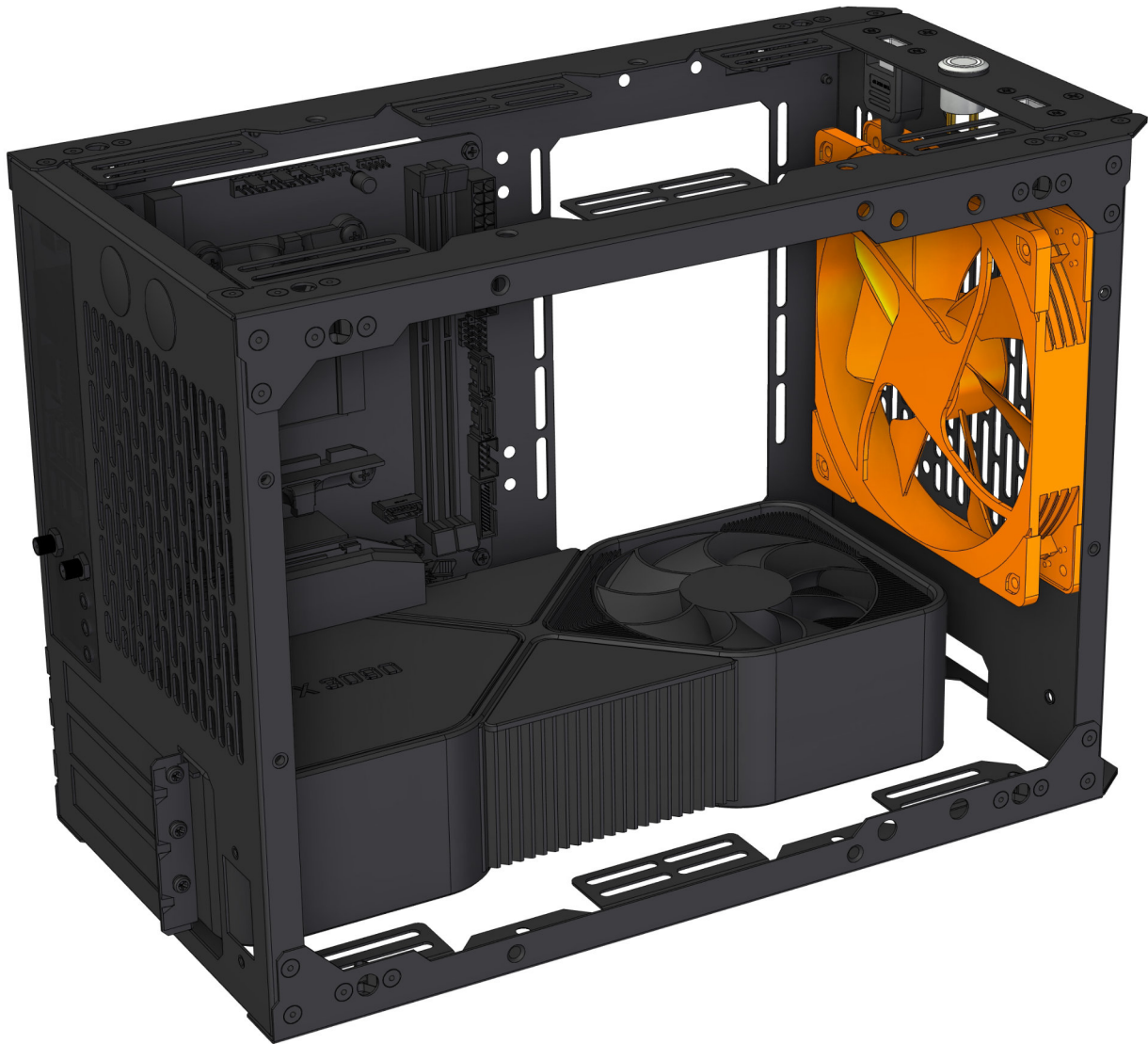




# FRONT FAN

The S620 supports up to 140mm by 25mm,

**NOTE:** Fan can only when used in conjunction with the "width-wise" PSU bracket.



**140MM by 25mm**

# MOTHERBOARD SIDE FAN

The S620 supports up to 120mm by 25mm on the motherboard side of chassis

**NOTE:** Fan can only when used in conjunction with the "width-wise" PSU Bracket and without any SSD's mounted.



**120mm by 25mm**

# REAR FAN

The S620 supports 120mm fan mounted on the rear of the chassis. Use standard KB5 screws to attach the fan. **NOTE:** KB5 screws not included.

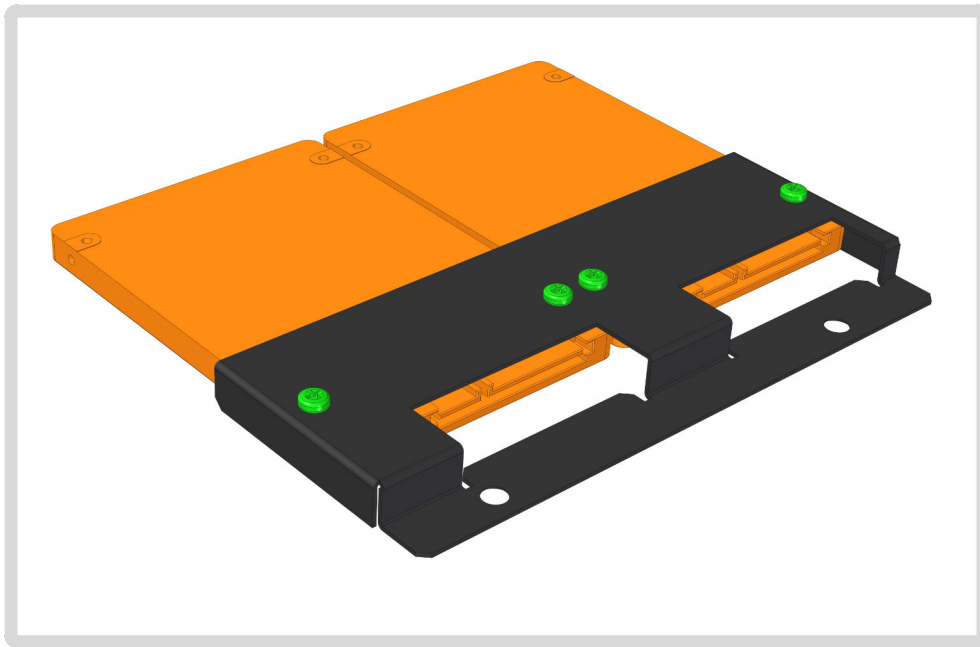


120mm x 25mm

# SSD MOUNTING

The S620 has an optional SSD window bracket. Each SSD attaches to the bracket with **2x M3 x 6mm PAN HEAD** screws. The assembly then attaches to the chassis with **2x 6-32 x 1/4" FLAT HEAD** screws.

**NOTE:** When using the SSD Window Bracket, You CAN NOT use the side bracket for fans or radiator, but you can pair the SSD window bracket with a 120mm AIO.





# CASE HANDLE BRACKET

The S610 case handle bracket can be mounted in two different locations show in the photos below. They are attached to the chassis with **4x 6-32 x 1/4" FLAT HEAD** screws.

**GPU Bottom Orientation**



**GPU Top Orientation**



**NOTE:** A 120mm by 15mm thick fan can be mounted to the case handle bracket.

Use **4x KB5** screws to attach fan to bracket. **Note:** KB5 screws not included.



# CASE HANDLE



**Case Handle is attached with 2x M4 x 12mm Socket Cap**

Use the included Allen key to tighten.

**NOTE:** Do not over-torque screws as it will marr paint on the top panel.

# AIR-COOLING CONFIGURATIONS

