



S610

Build Guide

SLIGER

SCREWS

The S610 comes with a total of 6 different screws. For the purposes of this guide we will assign a unique color to each screw to signify their locations in this guide.



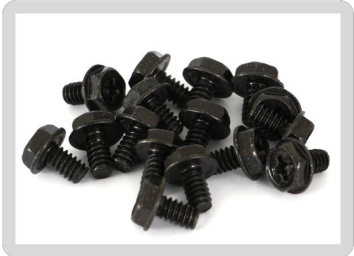
GREEN M3 x 6mm PAN HEAD

Securing PCIe Cards
SSD



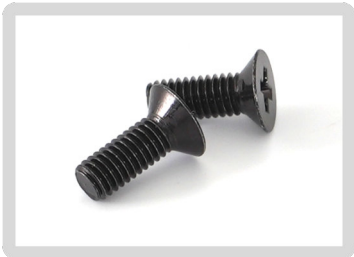
RED M3 x 5mm FLAT HEAD

SSDs (on SSD bracket)
USB and Power Button Bracket



VIOLET 6-32 x 1/4" HEX HEAD

Motherboard
Power Supplies
Radiator



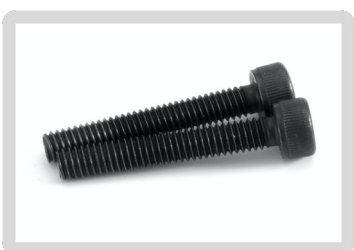
PINK M3 x 8mm FLAT HEAD

Power Cord Inlet



BLUE 6-32 x 1/4" FLAT HEAD

Handle Bracket
SFX PSU Brackets
Side Fan / Radiator Bracket

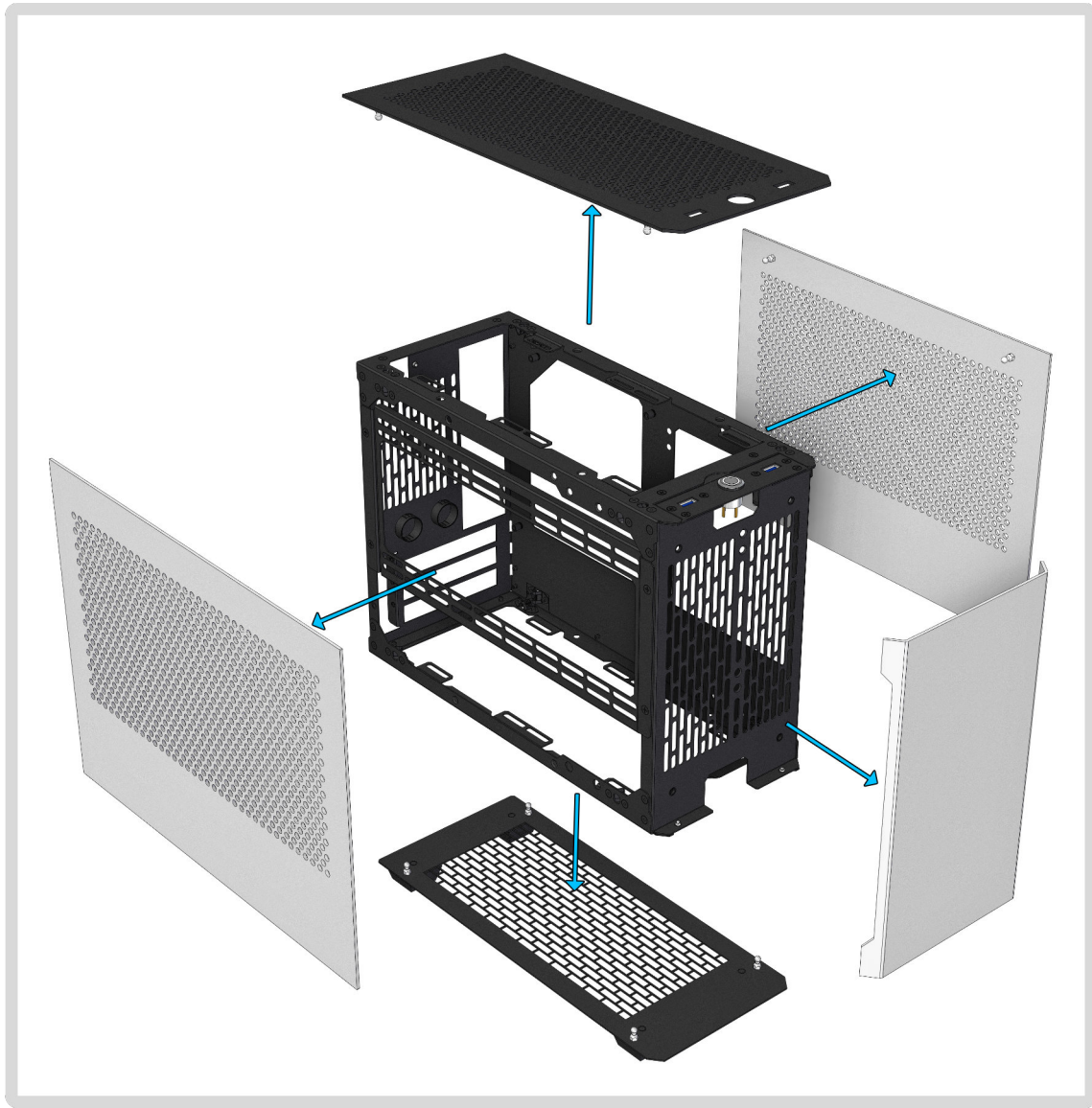


GREY M3 x 12mm SOCKET CAP

Case Handle

EASY-OFF PANELS

The front, side panels, top and bottom all have tool-less removal via their ball-stud mounting points. Careful, panels may be very tight on the first few times on/off.



RE-ASSEMBLY NOTES

Side panels are reversible to either side.

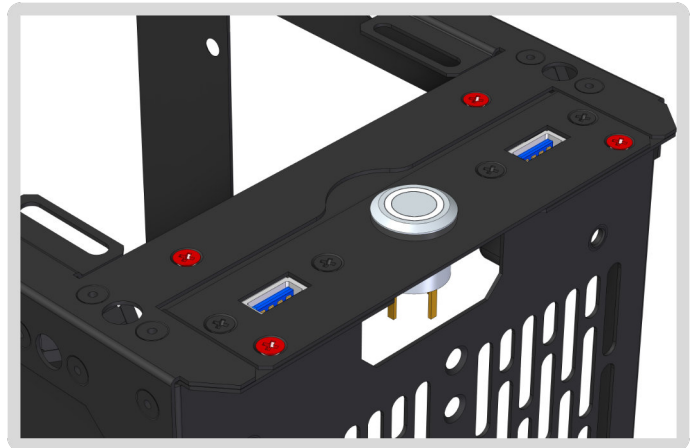
Front Panel can be installed with either end at top or bottom.

Power Button Location

The S610 has two power button locations allowing you to choose what orientation the case is. Either with the GPU on the bottom of the case, or GPU on the top of the case. Here is the process on removing the power button switch panel and installing it onto the other location.

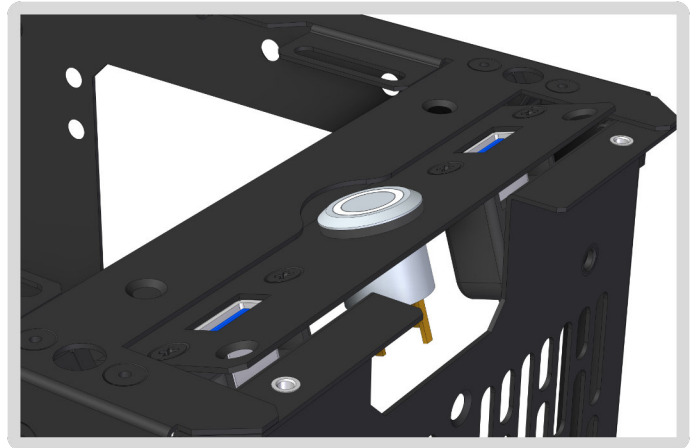
Step 1

Remove **4x M3 x 5mm FLAT HEAD**



Step 2

Tilt the Power Button Panel as shown in the photo.



Step 3

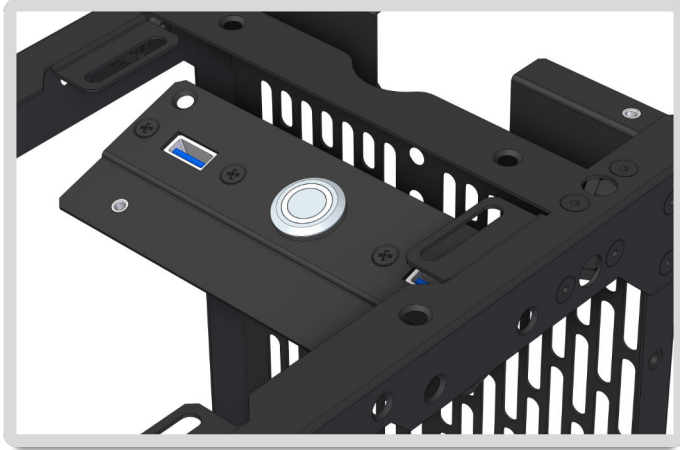
Slide the Power Button Panel towards the inside of the chassis.



Power Button Location Cont.

Step 4

Flip over the chassis so the bottom is now the top.



Step 5

Tilt the Power Button Panel as shown in the photo and reinsert the panel from inside of the chassis.



Step 6

Reuse the **4x M3 x 5mm FLAT HEAD** screws to secure panel.



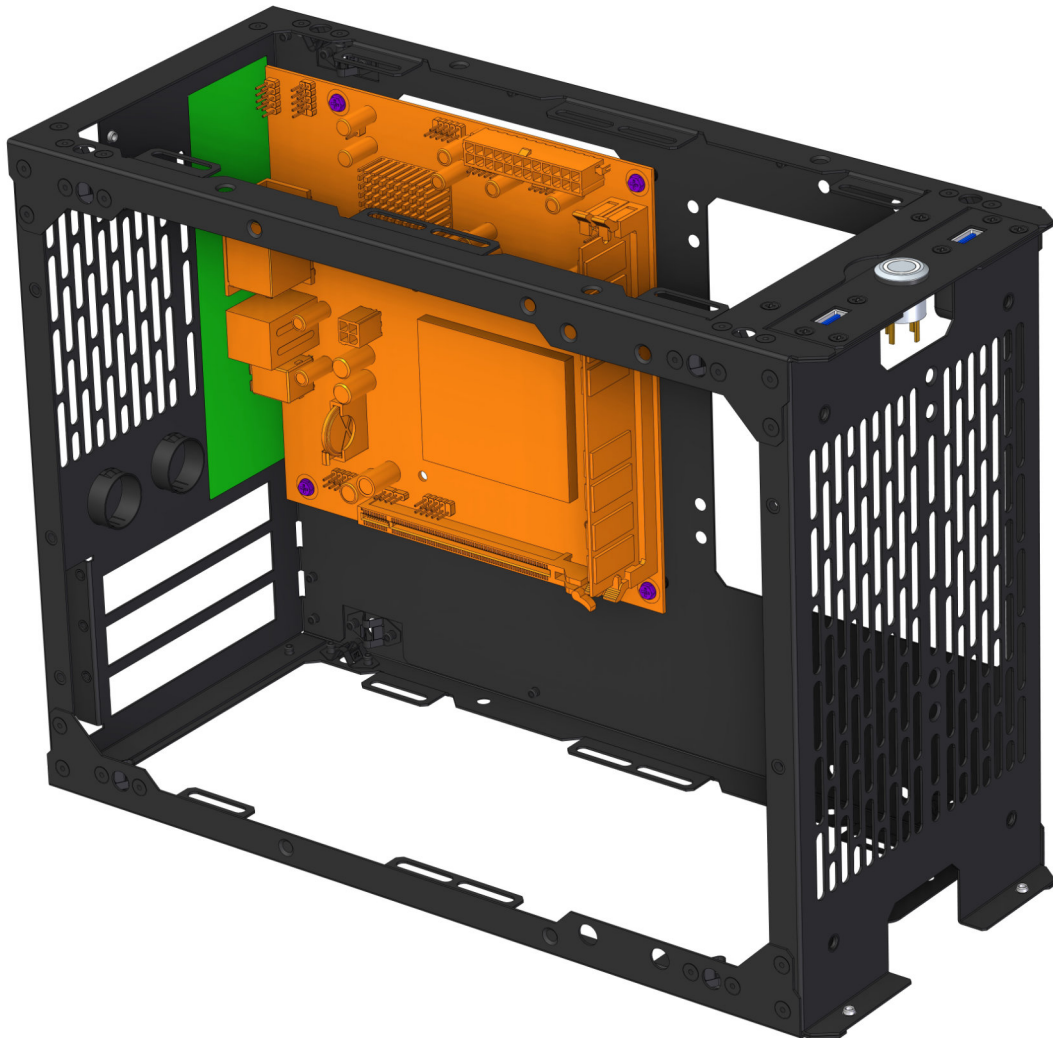
End Result

MOTHERBOARD

Be sure to install your **IO shield** first!

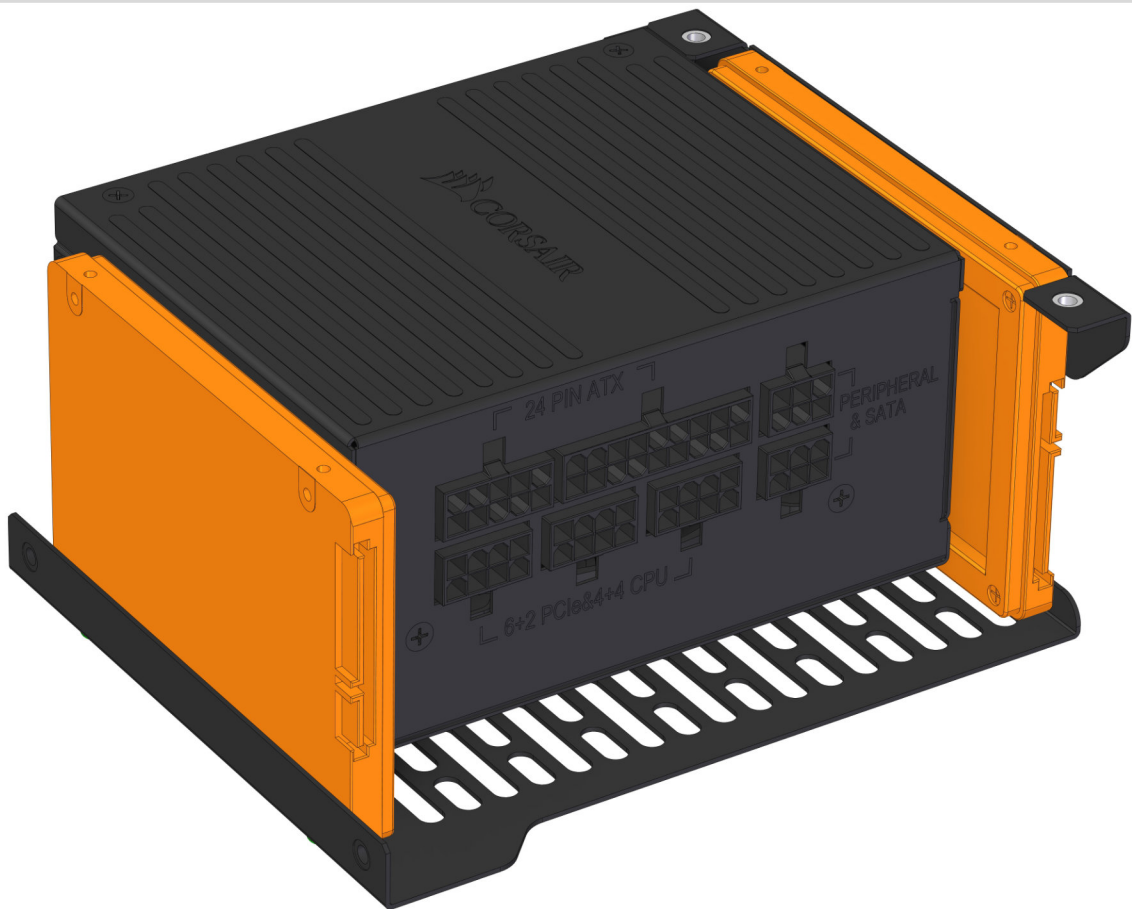
Some CPU coolers and AIOs may require a back plate to be installed before installing the motherboard into the case. Once the **IO shield** is properly installed the motherboard can now be mounted using **4x 6-32 x 1/4" HEX HEAD** screws.

A Phillips #2 screw driver with a minimum 3" shaft length is recommended for installing these screws.



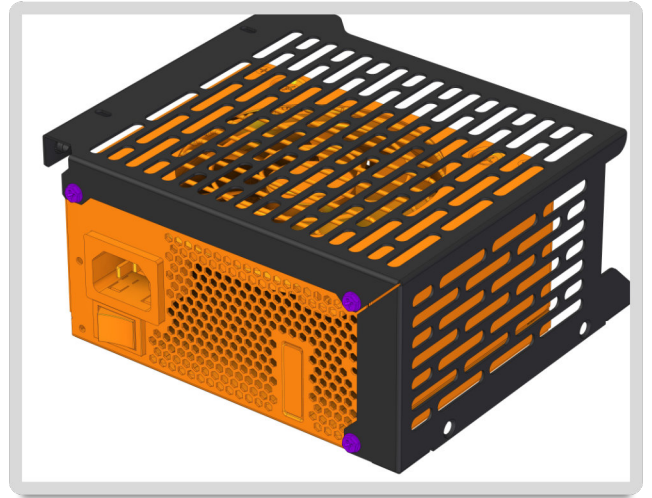
SSD MOUNTING

The S610 has a two SSD mounting locations on the SFX PSU Length-wise bracket. Each SSD attaches to the bracket with **2x M3 x 6mm PAN HEAD** screws. Be sure to install drives with the SATA power and data connections facing the same direction as PSU power connections.



POWER SUPPLY INSTALLATION

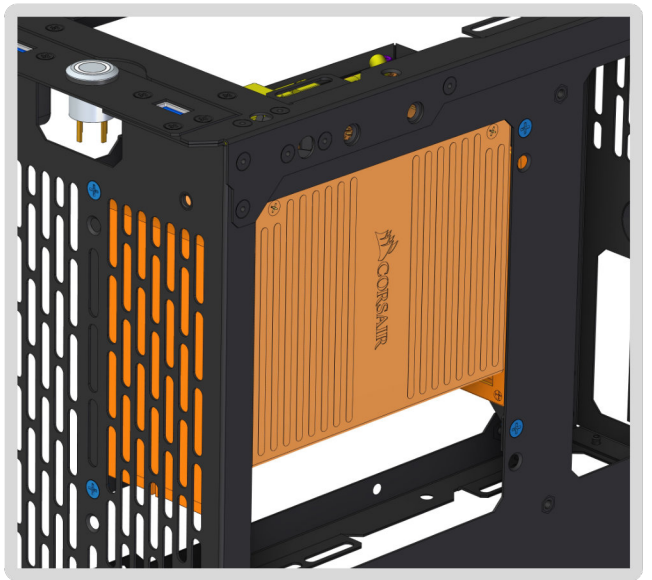
The SFX PSU attaches to the bracket with **3x 6-32 x 1/4" HEX HEAD** screws.



Install the power pig-tail by snaking it through the rear chassis hole and securing it with **2x M3 x 8mm FLAT HEAD** screws. Then insert into the SFX PSU.



Lastly, the SFX PSU mounting bracket is secured to the case spine via **2x 6-32 x 1/4" FLAT HEAD** screws. These screws are located at the top middle of the spine, next to the motherboard corner standoff. There are also **2x 6-32 x 1/4" FLAT HEAD** screw locations behind the front panel of the case.



WIDTH-WISE PSU INSTALLATION

The SFX PSU attaches to the Width-wise bracket with **6x 6-32 x 1/4" HEX HEAD** screws.



Then SFX PSU mounting bracket is secured to the case spine via **4x 6-32 x 1/4" FLAT HEAD** screws as shown in the photo.



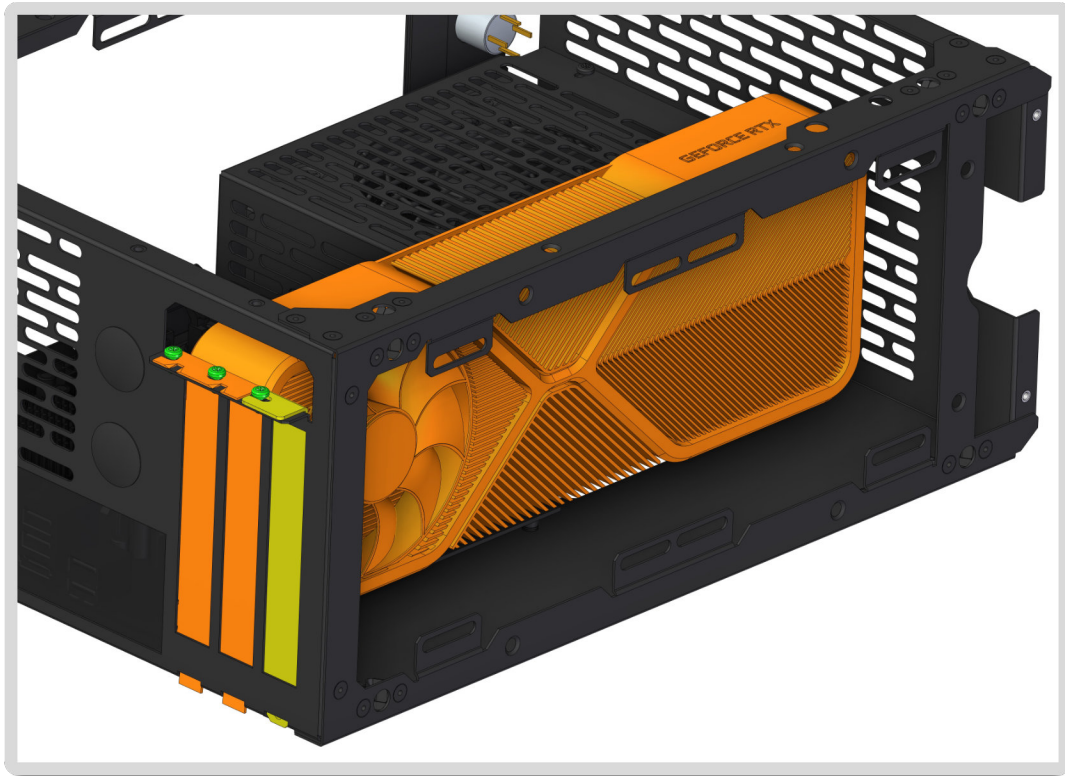
Install the power pig-tail by snaking it through the rear chassis hole and securing it with **2x M3 x 8mm FLAT HEAD** screws. Then insert into the SFX PSU.



PCIe CARD

The PCIe card is secured with up to **3x M3 x 6mm PAN HEAD** screws.

NOTE: Depending on your GPU card size. You may have to try different angles and approaches to get it in the chassis and seated into the PCIe slot.



Then install the PCIe Top cover with **1x 6-32 x 1/4" FLAT HEAD** screw.

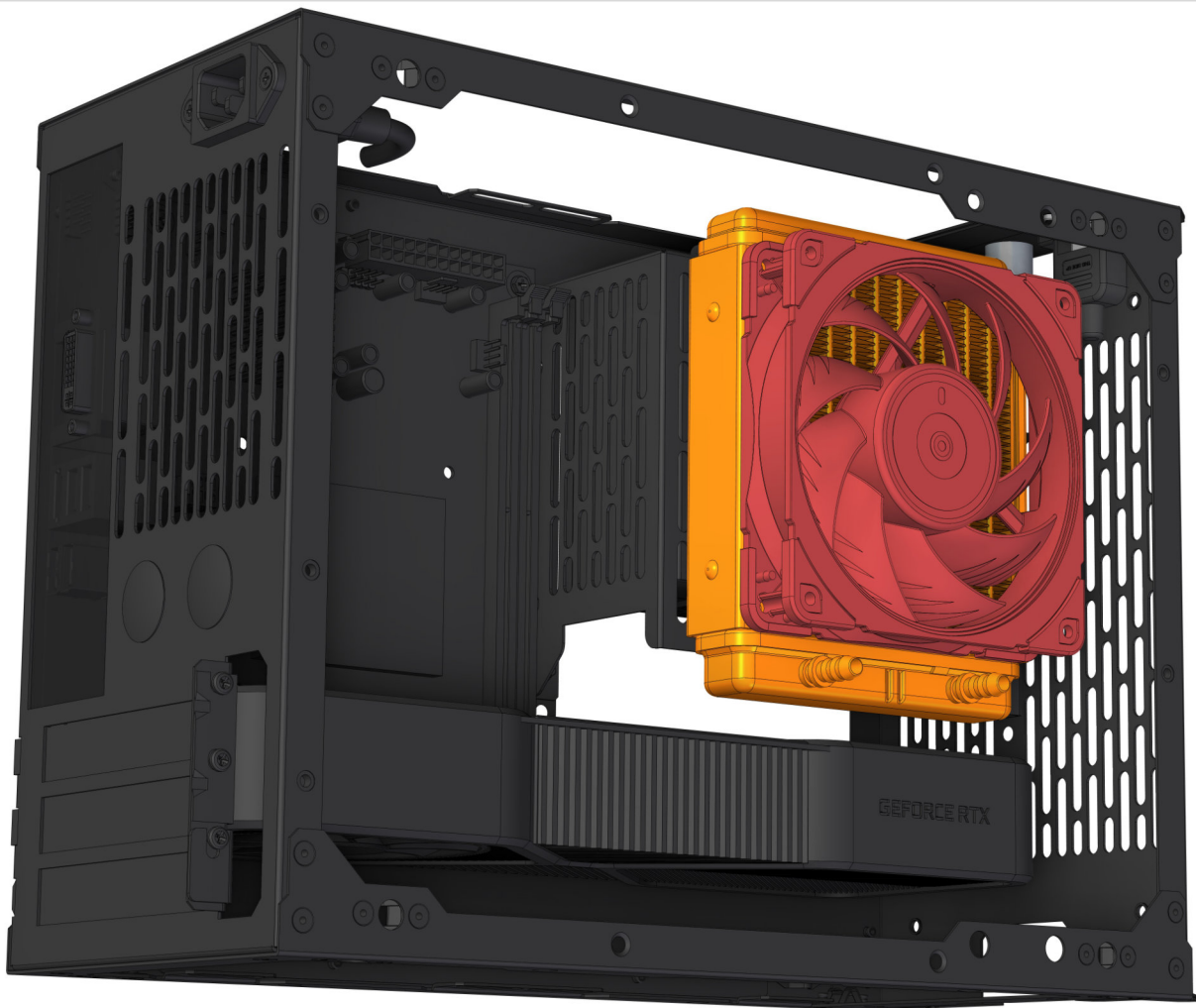


120/240/280mm AIO INSTALLATION

The S610 supports a variety of water-cooling / AIO setups. The three different configurations are; a 120mm AIO installed on the PSU Bracket, a 240mm radiator attached to the side bracket, or a 280mm radiator attached to the side bracket.

The 120mm radiator can be mounted to the PSU bracket as shown in the image below. Using **4x 6-32 x 1/4" HEX HEAD** screws to secure it to the bracket. Hoses must come out of the radiator facing the open side of the case as shown.

NOTE: You must attach radiator first before installing your SFX PSU.



240/280mm AIO INSTALLATION CONT.

The S610 side bracket supports either a 240mm or 280mm radiator. Fans are recommend to be mounted on the inside exhausting air out the side panel through the radiator.

NOTE: For the 280mm radiator, it is best to set the radiator inside the case after getting the water block secured to the CPU, and then placing the side bracket over the radiator. Secure the radiator to side bracket with **4x to 8x 6-32 x 1/4" HEX HEAD** screws. Lastly, the side bracket is attached to the chassis with **4x 6-32 x 1/4" FLAT HEAD** screws.



SIDE BRACKET FANS

The S610 side bracket can fit **2x** 120mm or 140mm fans.



120mm



140mm

TOP MOUNTED FANS

The S610 can fit **2x** 120mm slim 15mm fans mounted on the top of the chassis.

NOTE: The case handle bracket can not be used with this configuration.



FRONT FAN

The S610 supports up to 120MM by 25mm,

NOTE: Fan can only when used in conjunction with the "Width-wise" PSU Bracket.



120MM by 25mm

REAR FAN

The S610 supports either an 80mm or 92mm fan mounted on the rear of the chassis. Use standard KB5 screws to attach the fan.



80mm

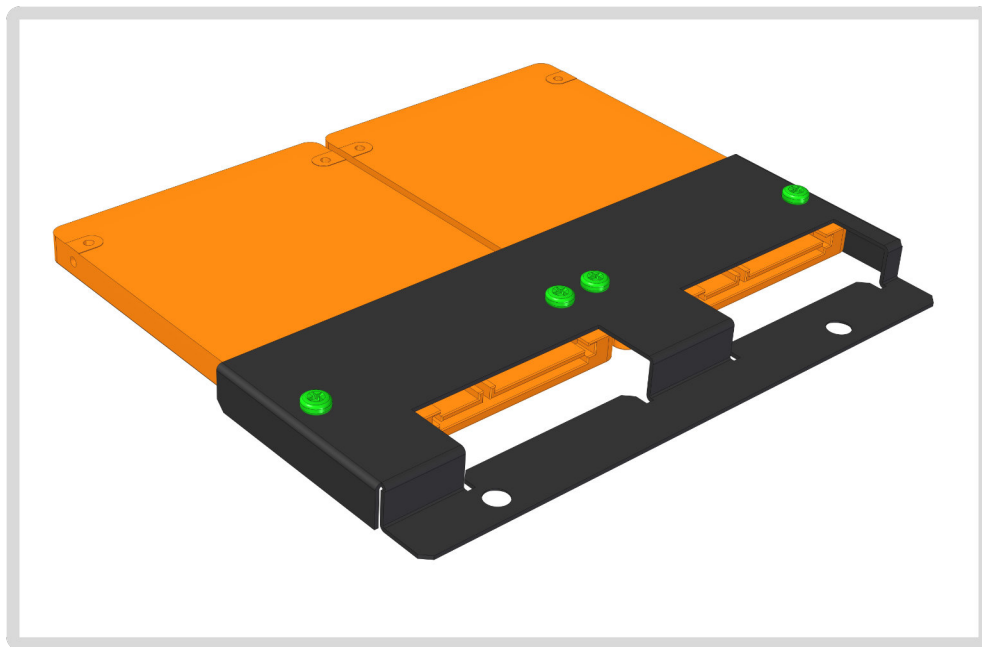


92mm

SSD MOUNTING

The S610 has an optional SSD window bracket. Each SSD attaches to the bracket with **2x M3 x 6mm PAN HEAD** screws. The assembly then attaches to the chassis with **2x 6-32 x 1/4" FLAT HEAD** screws.

NOTE: When using the SSD Window Bracket, You CAN NOT use the side bracket for fans or radiator, but you can pair the SSD window bracket with our 120mm AIO kit.



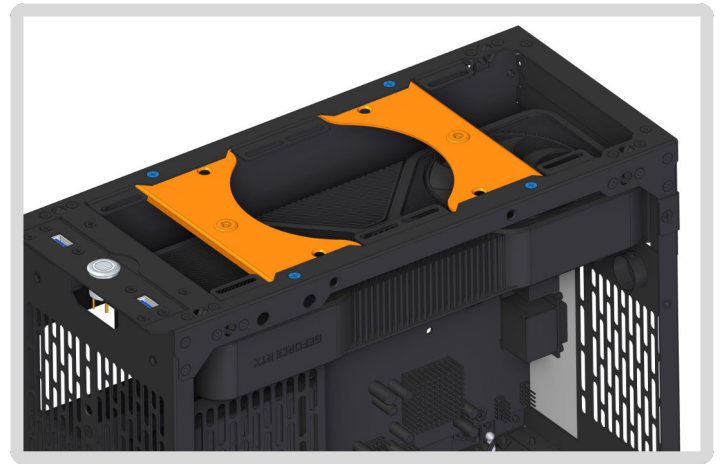
CASE HANDLE BRACKET

The S610 case handle bracket can be mounted in two different locations show in the photos below. They are attached to the chassis with **4x 6-32 x 1/4" FLAT HEAD** screws.

GPU Bottom Orientation

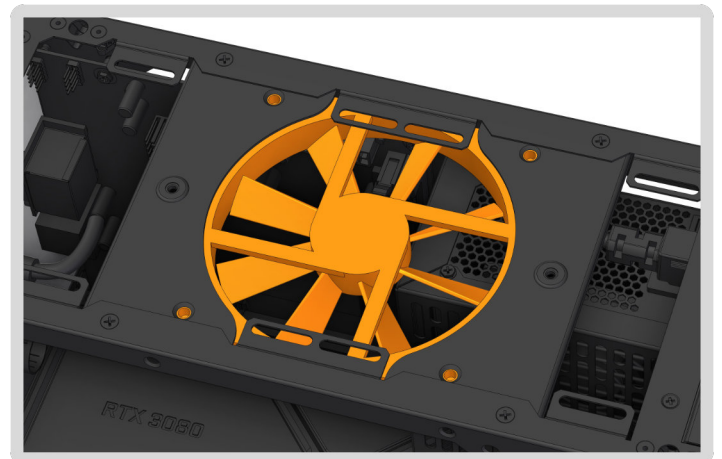


GPU Top Orientation

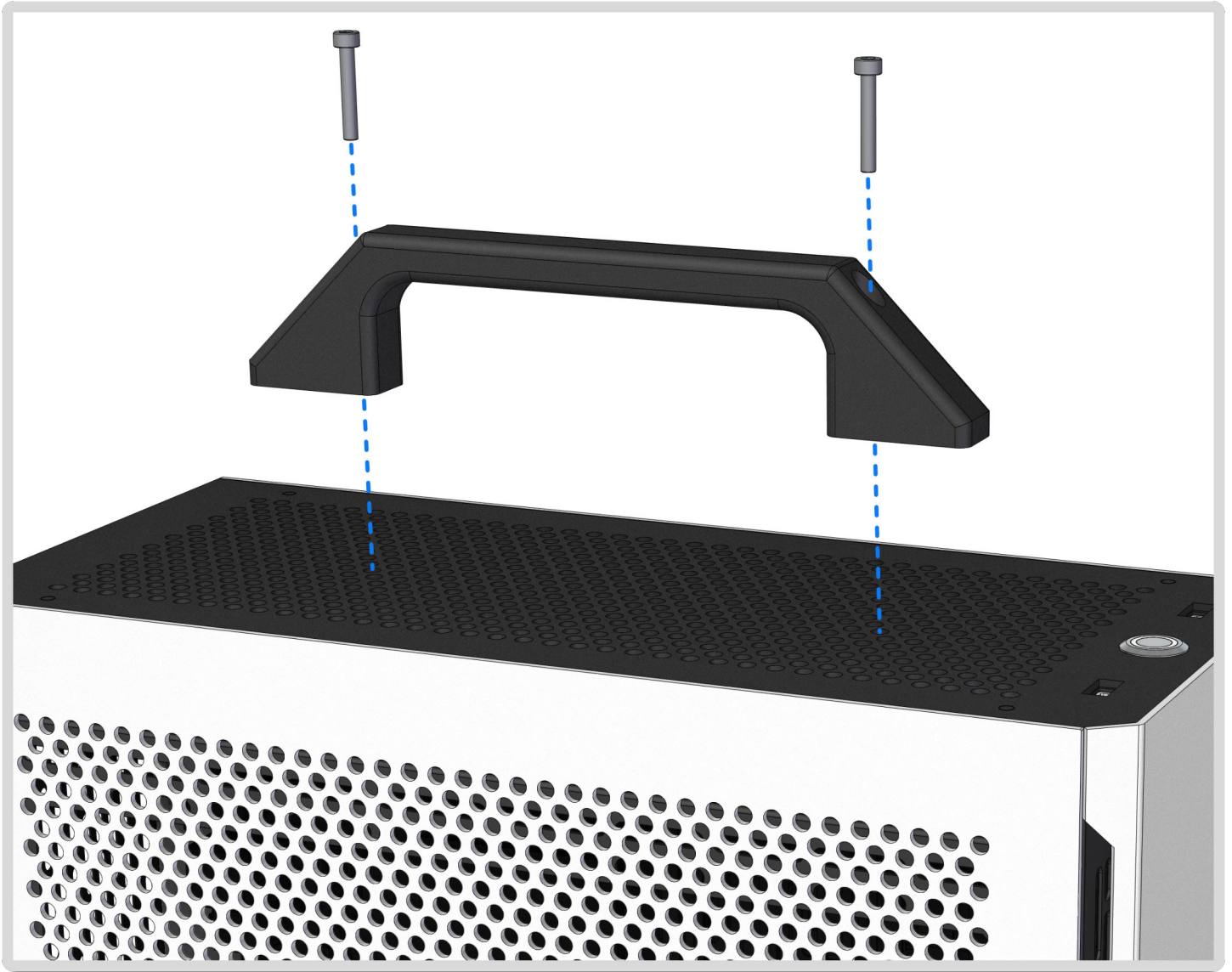


NOTE: A 120mm by 15mm thick fan can be mounted to the case handle bracket.

Use **4x KB5** screws to attach fan to bracket. **Note:** KB5 screws not included.



CASE HANDLE



Case Handle is attached with 2x M4 x 12mm Socket Cap

Use the included Allen key to tighten.

NOTE: Do not over-torque screws